

## SMOOTHFLO®

SmoothFlo pumps have revolutionized the performance of diaphragm pumps. Our exclusive FLO-IQ technology will completely eliminate rapid switch cycling. SmoothFlo pumps are the perfect option for any softwash job.

### THE ULTIMATE BLEACH & SOFTWASH PUMP

**PRESSURE SETTING: 100 PSI**



**OPEN FLOW RANGE: 5.3 - 7.0 GPM**

#### PUMP OPTIONS

- FLUID PORTS: 3/4" QUICK ATTACH
- VOLTAGE: 12 / 24 VDC OR 115 VAC
- MATERIALS: VITON / SANTOPRENE / NYLON / POLY
- DUAL CONTROL / FLO IQ
- MOTORS: HEAVY DUTY / SEALED
- PACKAGING: BULK / SINGLE BOX / RETAIL AVAILABLE
- MANY OTHER OPTIONS AVAILABLE

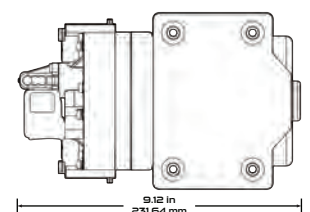
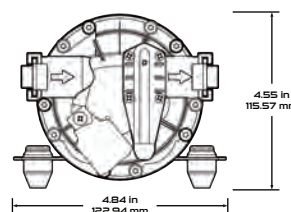
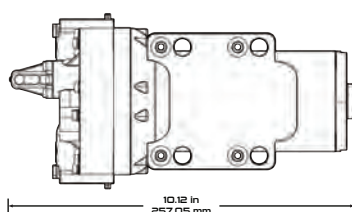
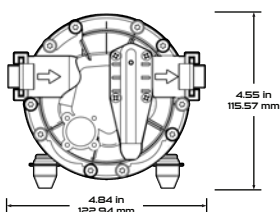
#### STANDARD FEATURES

- PROFESSIONAL GRADE QUALITY
- MADE IN THE UNITED STATES
- 100% FACTORY TESTED PERFORMANCE
- COMPLETELY SEALED MOTOR
- LOW HEAT AND POWER CONSUMPTION
- SUPERIOR VERTICAL PRIMING

#### TYPICAL APPLICATIONS

- BLEACH AND SOFTWASH
- CHEMICAL SPRAYING
- BULK FLUID TRANSFER
- WATER TREATMENT
- ALTERNATIVE ENERGY

#### PUMP DIMENSIONS

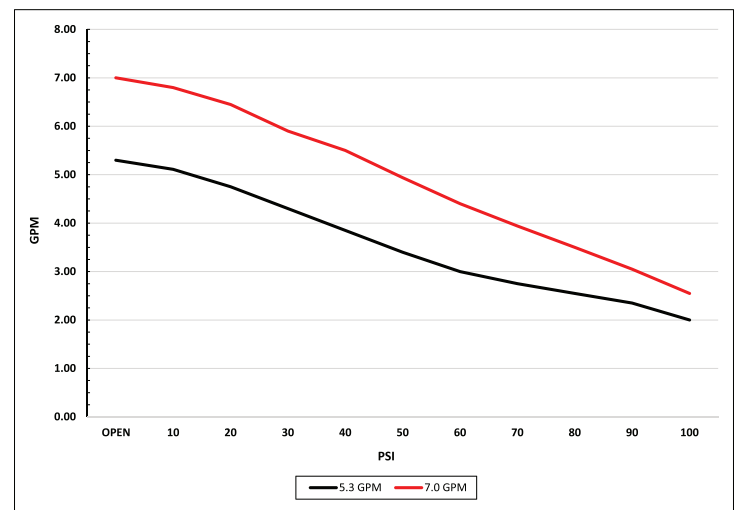


#### TECHNICAL INFORMATION

- 14 AWG - 12" STRIPPED WIRE / CUSTOM CONNECTION
- 14FT (4.0M) PRIMING CAPABILITY
- FLO-IQ PRESSURE CONTROL
- DRY RUN CAPABILITY
- 140°F (60°C) MAX LIQUID TEMPERATURE
- 180°F (82°C) MAX MOTOR TEMPERATURE

#### PUMP PERFORMANCE

(PERFORMANCE MAY VARY)



(DIMENSIONS MAY VARY BY MODEL)

## PUMP CONFIGURATIONS

(ADDITIONAL CONFIGURATIONS AVAILABLE)

STANDARD							
Item Number	Flow	Controls	Pressure	Valves	Diaphragm	Ports	Voltage
5917-911-63B	5.3 GPM (20.06 LPM)	FLO-IQ	100 PSI (6.89 BAR)	VITON	SANTOPRENE	3/4" QUICK ATTACH	12 VDC
5918-911-94A	7.0 GPM (26.5 LPM)	FLO-IQ	100 PSI (6.89 BAR)	VITON	SANTOPRENE	3/4" QUICK ATTACH	12 VDC

24 VDC							
Item Number	Flow	Controls	Pressure	Valves	Diaphragm	Ports	Voltage
5917-911-731B-B	5.3 GPM (20.06 LPM)	FLO-IQ	100 PSI (6.89 BAR)	VITON	SANTOPRENE	3/4" QUICK ATTACH	24 VDC
5917-911-731B	5.3 GPM (20.06 LPM)	FLO-IQ	100 PSI (6.89 BAR)	VITON	SANTOPRENE	3/4" QUICK ATTACH	24 VDC
5918-911-61A-B	7.0 GPM (26.5 LPM)	FLO-IQ	100 PSI (6.89 BAR)	VITON	SANTOPRENE	3/4" QUICK ATTACH	24 VDC
5918-911-61A	7.0 GPM (26.5 LPM)	FLO-IQ	100 PSI (6.89 BAR)	VITON	SANTOPRENE	3/4" QUICK ATTACH	24 VDC

110/120 VAC							
Item Number	Flow	Controls	Pressure	Valves	Diaphragm	Ports	Voltage
5917-911-65C-B	5.3 GPM (20.06 LPM)	FLO-IQ	100 PSI (6.89 BAR)	VITON	SANTOPRENE	3/4" QUICK ATTACH	110/120 VAC
5917-911-65C	5.3 GPM (20.06 LPM)	FLO-IQ	100 PSI (6.89 BAR)	VITON	SANTOPRENE	3/4" QUICK ATTACH	110/120 VAC
5918-911-69A-B	7.0 GPM (26.5 LPM)	FLO-IQ	100 PSI (6.89 BAR)	VITON	SANTOPRENE	3/4" QUICK ATTACH	110/120 VAC
5918-911-69A	7.0 GPM (26.5 LPM)	FLO-IQ	100 PSI (6.89 BAR)	VITON	SANTOPRENE	3/4" QUICK ATTACH	110/120 VAC

RETAIL OPTIONS							
Item Number	Flow	Controls	Pressure	Valves	Diaphragm	Ports	Voltage
90-5917-911-63B-SB	5.3 GPM (20.06 LPM)	FLO-IQ	100 PSI (6.89 BAR)	VITON	SANTOPRENE	3/4" QUICK ATTACH	12 VDC
90-5918-911-94A-SB	7.0 GPM (26.5 LPM)	FLO-IQ	100 PSI (6.89 BAR)	VITON	SANTOPRENE	1/2" FNPT	12 VDC

**CONTACT US FOR OUR ENTIRE LIST OF PUMP CONFIGURATIONS**

## RECOMMENDED PARTS & ACCESSORIES

(ADDITIONAL PARTS & ACCESSORIES AVAILABLE)



PSW-5100R-80



PSW-FB-80-R



901-013-R



RACT-820-NTP



901-RC02-R



FQ55-34

